

MONA

Morali



AI ARTIST &
PHOTOGRAPHER

EUROPE

THE USE OF PHOTOGRAPHY AS AN INSTRUMENT FOR COMMUNICATION AND EXPRESSION IS EVIDENT IN MONA'S WORK. DURING THIS PROCESS, SHE ALSO LOOKS AT FREE MOVEMENT TO CREATE MODERN AND INNOVATIVE POSES - ALL RESULTING IN THAT PLAY OF COLOR AND COMPOSITION.

COMMERCIAL CLIENTS

BMW, BREUNINGER, C&A
T:SEHNE, PUMA, S.OLIVER,
RIMARKA, TOM TAILOR
JBJK COUTURE, CURATED BY, BOGNER,
CLOSED, HUGO BOSS, KIND AGENCY

EDITORIAL CLIENTS

Á PART PUBLICATIONS,
GLAMCULT, LATEST MAGAZINE
PANSY MAGAZINE
MANIFEST

ABOUT

SOMEWHERE BETWEEN BERLIN, AMSTERDAM AND PARIS.

MONA MORALI WAS SURROUNDED BY CREATIVITY FROM WHEN SHE WAS BORN, TAGGING ALONG WITH HER MOTHER TO ART SCHOOL AND A FATHER, WHO WAS PHOTOGRAPHING LANDSCAPES ON THE SIDE -

AND NOW SHE HAS DEVELOPED INTO AN ALLROUND TALENT WORKING AS AN AI ARTIST.

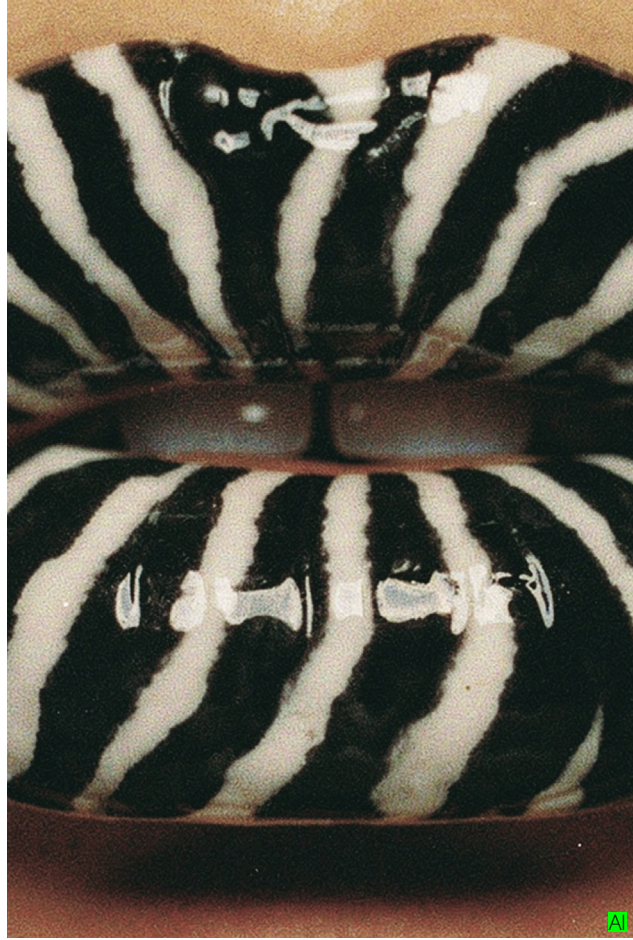
THE USE OF PHOTOGRAPHY AND AI, IS AN INSTRUMENT FOR COMMUNICATION AND EXPRESSION.

DURING THIS PROCESS, SHE ALSO LOOKS AT FREE MOVEMENT TO CREATE MODERN AND INNOVATIVE POSES - ALL RESULTING IN THAT PLAY OF COLOR AND COMPOSITION.

HAVING PROGRESSED INTO A CREATIVE AI DIRECTOR SHE NOW SHAPES EVERY DETAIL IN THIS EVOLUTIONARY SHIFT OF HER VISUAL JOURNEY.

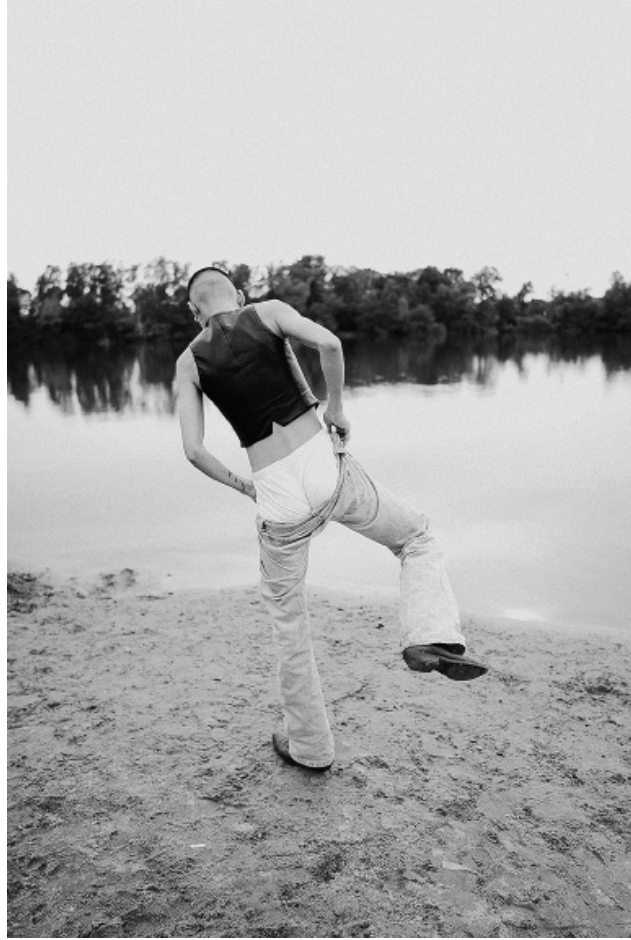
THE MORE EXTENSIVE CONCEPTS DEAL WITH CRITICAL TOPICS LIKE EQUAL RIGHTS, ENVIRONMENTAL PROTECTION AND OTHER IMPORTANT ISSUES.

AND IN-BETWEEN YOU CAN ALWAYS FIND SOME BLACK AND WHITE PHOTOGRAPHS, INSPIRED BY HER DAD.





















A

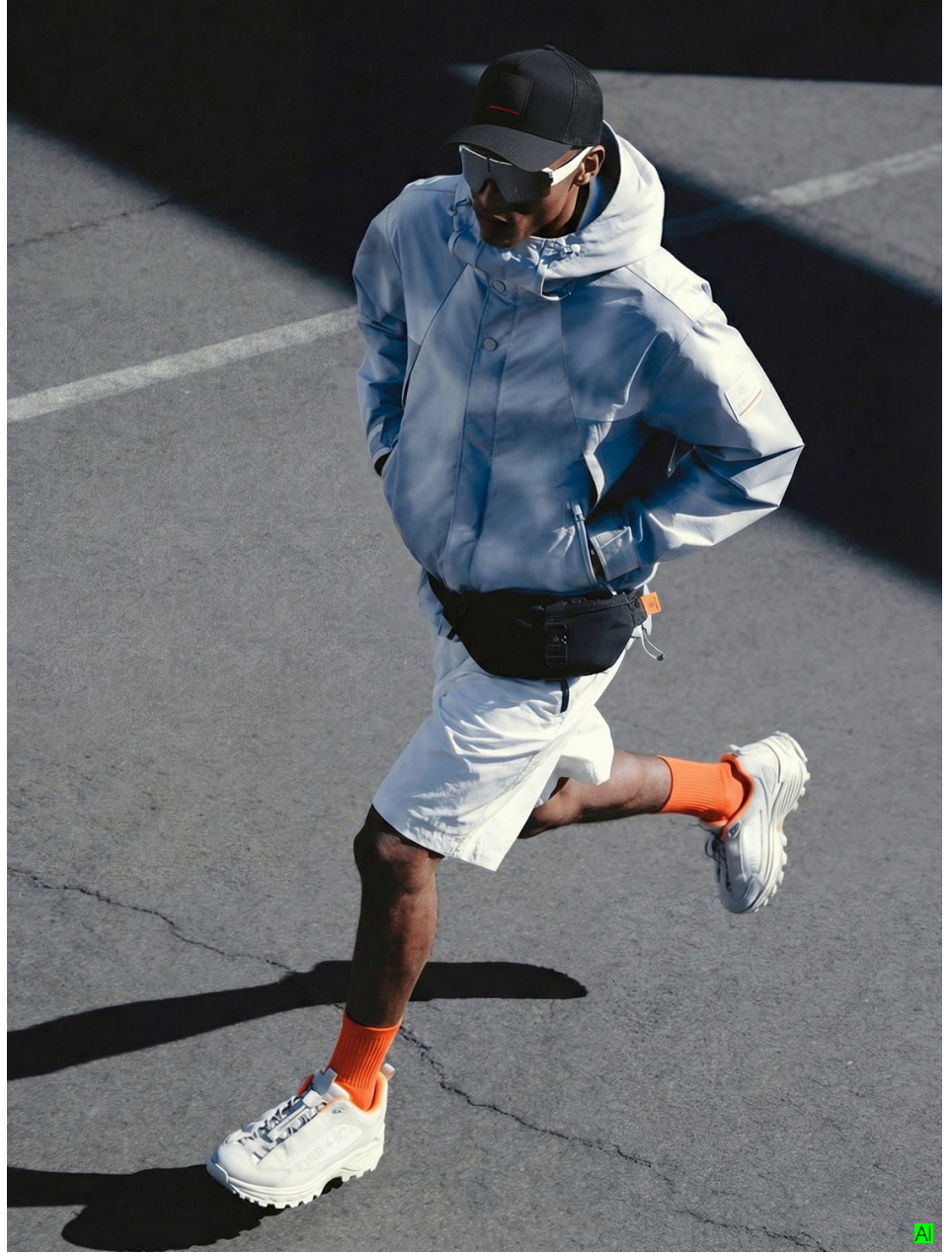


A





AI



AI

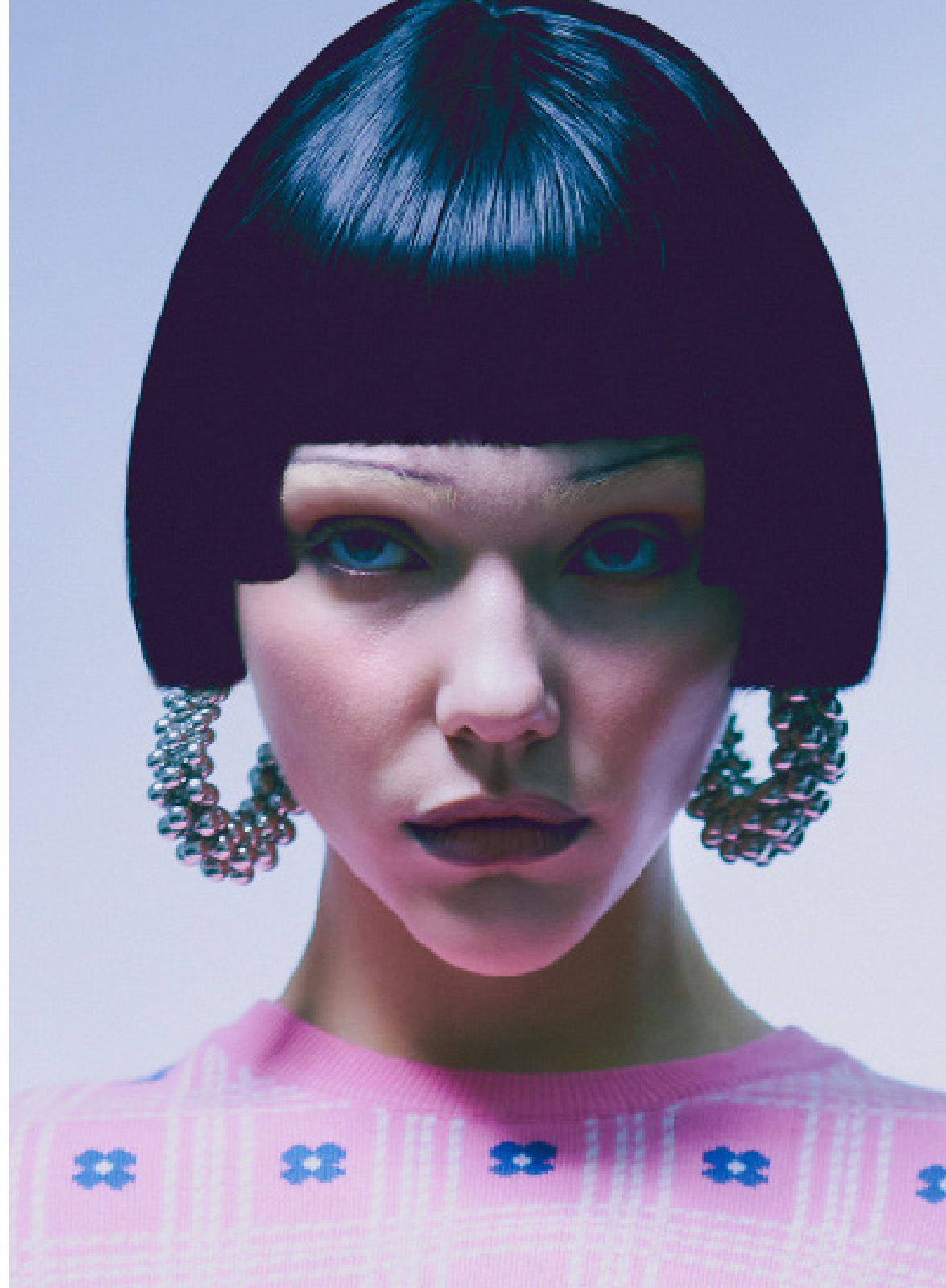


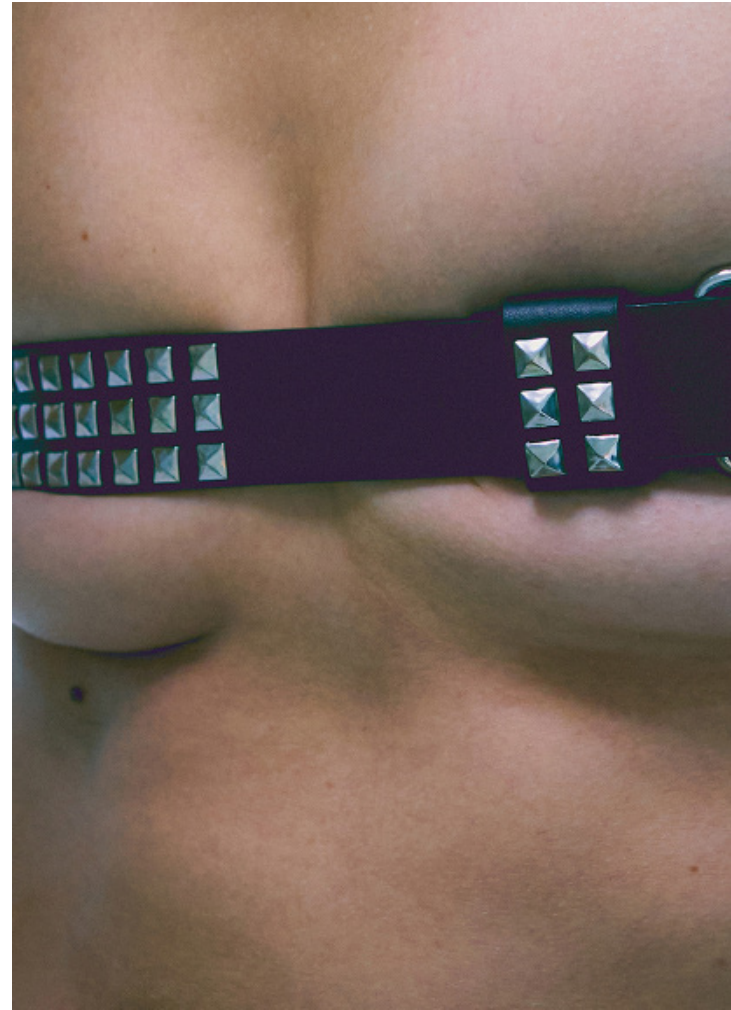


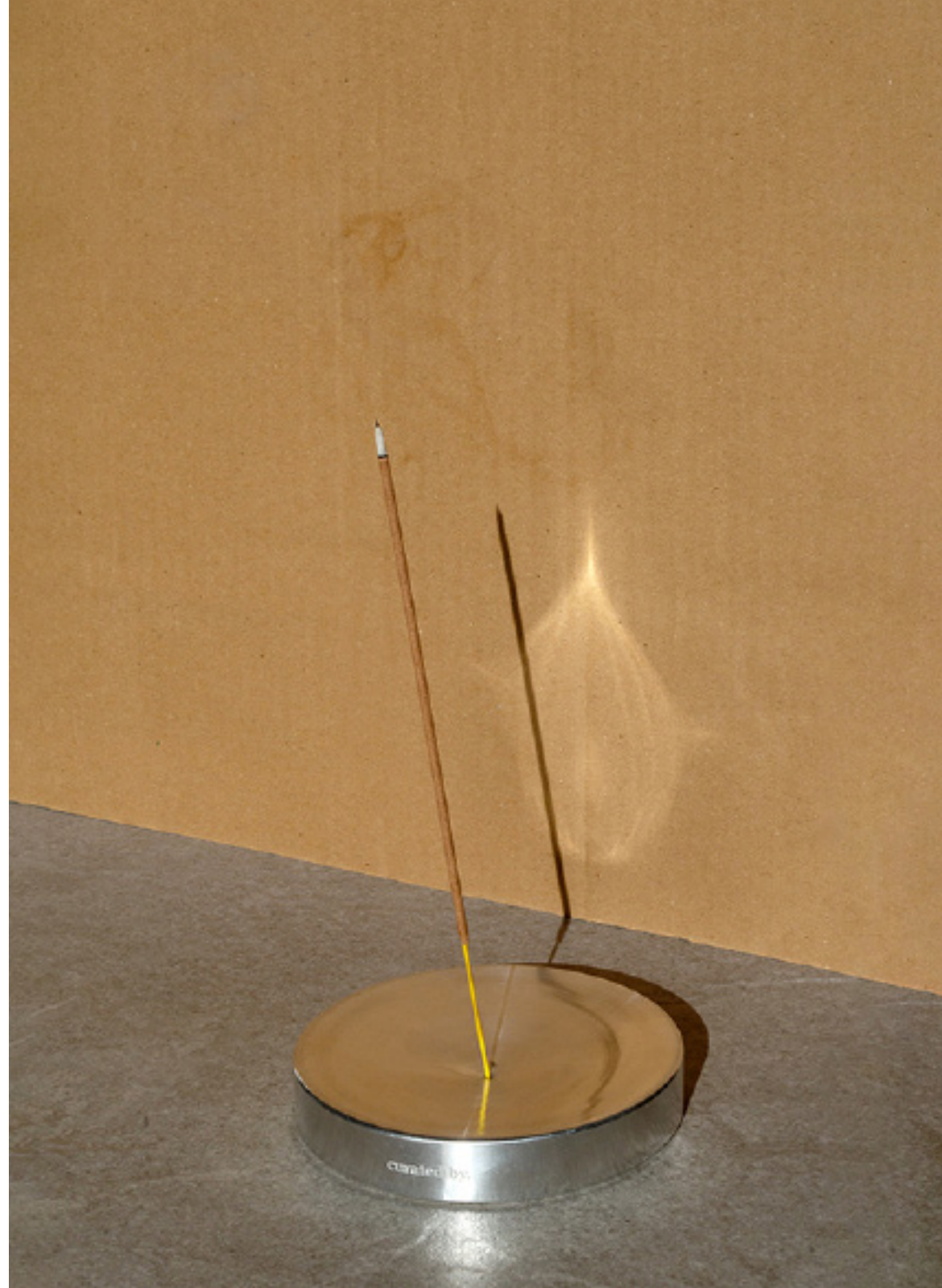
FIRE + ICE

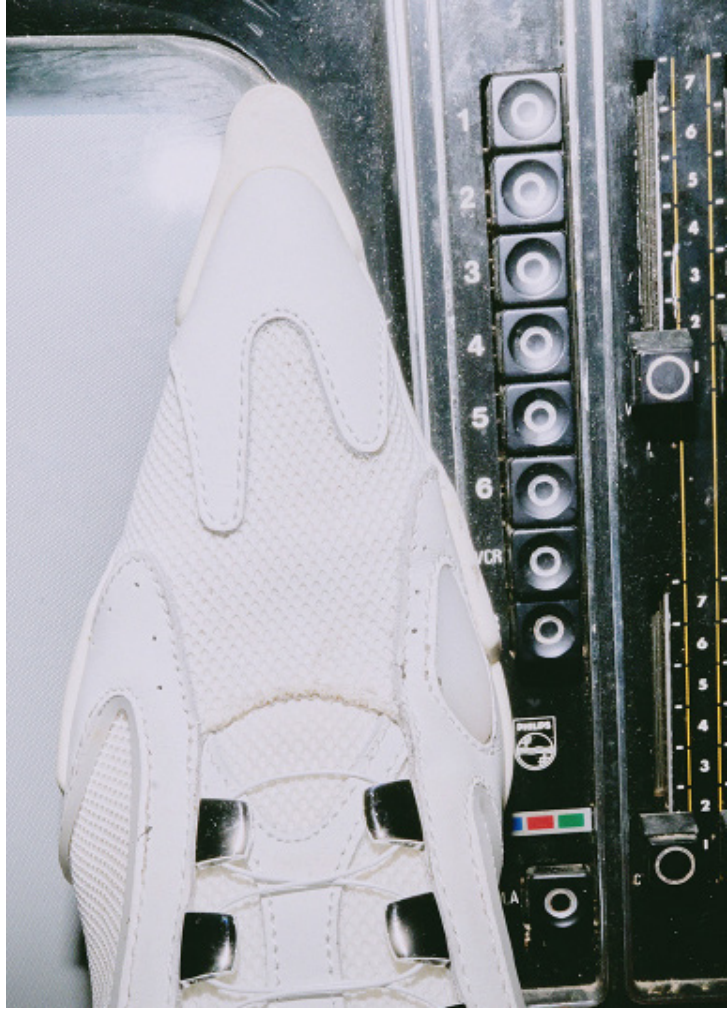
Kithen

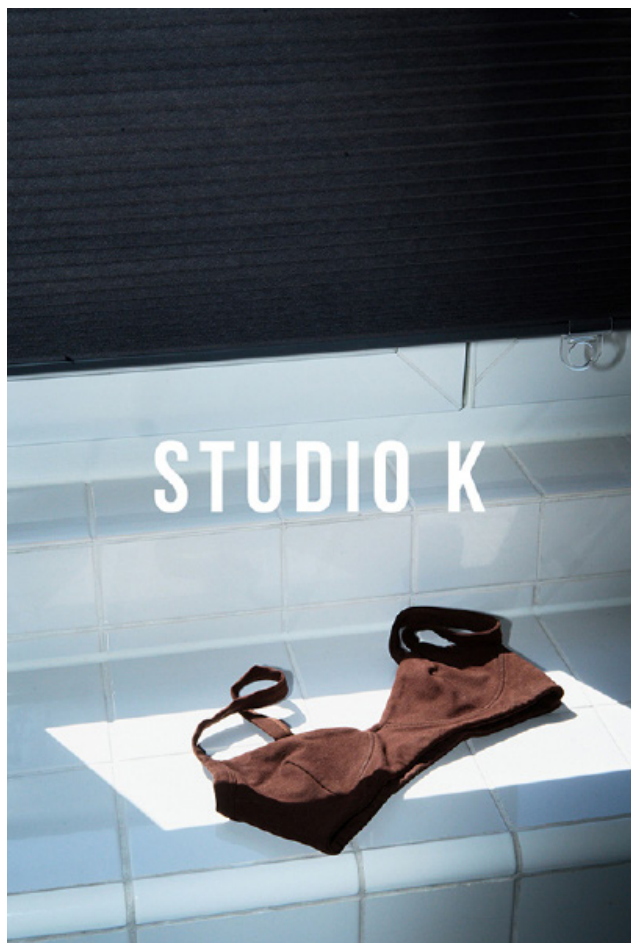














Rimärka















K.I.N.D











T/SEHNE











T/SEHNE





collectiveinterest

ARTIST MANAGEMENT & PRODUCTION

Sredzkistraße 29, 10435 Berlin / we@collectiveinterest.world / +49 (0) 30 220 09162

www.collectiveinterest.world